

DATE: 22 March 2021
DESIGNER: Alex Naper
PROJECT No: SES 15220 Rev F
PROJECT NAME: Enniskerry - Cookstown - Cairn Homes



Area designed to EN13201-2:2015 Category P4.

Rev A: Road section to R760 junction lit.
Rev B: 5 columns relocated to opposite side of the road.
Rev C: Road luminaires to 6m.
Rev D: Boundary line updated,
Rev E: Boundary line updated.
Rev F: Boundary line updated.

Outdoor Lighting Report

PREPARED BY: Sabre Electrical Services Ltd.
Unit 11,
Bellview Industrial Estate,
Tolka Valley Road,
Dublin 11
Phone Number: 01 8110875
Contact: Graham Sheehan
eMail: graham@sabrelighting.ie

Layout Report

General Data

Dimensions in Metres Angles in Degrees

Calculation Grids

ID	Grid Name	X	Y	X' Length	Y' Length	X' Spacing	Y' Spacing
1	Grid 1	721105.00	703600.00	313.00	346.00	1.50	1.50
2	Grid 2	720859.00	703850.00	329.00	117.00	1.50	1.50
3	Grid 3	721187.00	703899.00	208.00	51.00	1.50	1.50

Luminaires



Luminaire A Data

Supplier	C U Phosco
Type	P852-12-P4-WW-CA0550-21W
Lamp(s)	730C WW
Lamp Flux (klm)	2.56
File Name	P852-12-P4-WW-CA0550-21W.ies
Maintenance Factor	0.83
Imax70,80,90(cd/klm)	730.4, 161.4, 0.8
No. in Project	43



Luminaire B Data

Supplier	C U Phosco
Type	P852-12-R3B-WW-CA0200-9W
Lamp(s)	730C WW
Lamp Flux (klm)	1.04
File Name	P852-12-R3B-WW-CA0200-9W.ies
Maintenance Factor	0.83
Imax70,80,90(cd/klm)	876.7, 56.5, 1.7
No. in Project	8



Luminaire D Data

Supplier	Urbis Schreder
Type	AXIA 2.1 5166 [[see details], PC, Black], [Integrated lenses]
Lamp(s)	24 NVSL219CT@490mA WW830 230V 00-14-561
LampFlux(klm)/Colour	3.50 WW 3000K/80
File Name	AXIA 2.1 5166 24 NVSL219CT 490mA WW 830 38W 393002 [[see details], PC, Black], ...
Maintenance Factor	0.85
Imax70,80,90(cd/klm)	1101.1, 242.8, 0.0
No. in Project	5

Luminaire E Data

Supplier	Philips
Type	2685 SNN-1C#
Lamp(s)	1 ST 150 17500 2000 E40
LampFlux(klm)/Colour	17.50 1950 / 23
File Name	Arc 2685 SNN 1C# 1 ST 150 17500 1950 E 40.ltd
Maintenance Factor	0.83
Imax70,80,90(cd/klm)	352.0, 100.0, 5.0
No. in Project	2



Luminaire F Data

Supplier	Urbis Schreder
Type	AXIA 2.1 5187 [[see details], PC, Black], [Integrated lenses]
Lamp(s)	24 NVSL219CT@490mA WW830 230V 00-14-561
LampFlux(klm)/Colour	3.36 WW 3000K/80
File Name	AXIA 2.1 5187 24 NVSL219CT 490mA WW 830 38W 393152 [[see details], PC, Black], ...
Maintenance Factor	0.83
Imax70,80,90(cd/klm)	916.8, 101.4, 0.0
No. in Project	3



Luminaire G Data

Supplier	Urbis Schreder
Type	AXIA 2.1 5165 [[see details], PC, Black], [Integrated lenses]
Lamp(s)	24 NVSL219CT@540mA WW830 230V 00-14-561
LampFlux(klm)/Colour	3.87 WW 3000K/80
File Name	AXIA 2.1 5165 24 NVSL219CT 540mA WW 830 41W 392972 [[see details], PC, Black], ...
Maintenance Factor	0.85
Imax70,80,90(cd/klm)	1242.0, 273.4, 0.0
No. in Project	5

Luminaires**Luminaire H Data**

Supplier	C U Phosco
Type	P852-12-F2-WW-CA0550-21W
Lamp(s)	730C WW
Lamp Flux (klm)	2.51
File Name	P852-12-F2-WW-CA0550-21W.ies
Maintenance Factor	0.83
Imax70,80,90(cd/klm)	750.5, 280.0, 34.0
No. in Project	1

Layout

ID	Type	X	Y	Height	Angle	Tilt	Cant	Out-reach	Dimmed to	Target X	Target Y	Target Z
1	A	721232.34	703913.92	6.00	178.00	5.00	0.00	0.40	100%			
2	A	721239.45	703885.24	6.00	210.00	5.00	0.00	0.40	100%			
3	A	721252.22	703863.29	6.00	208.00	5.00	0.00	0.40	100%			
4	A	721263.41	703840.95	6.00	198.00	5.00	0.00	0.40	100%			
5	A	721272.48	703809.82	6.00	193.00	5.00	0.00	0.40	100%			
6	A	721279.38	703777.28	6.00	188.00	5.00	0.00	0.40	100%			
7	A	721233.86	703838.65	6.00	287.00	5.00	0.00	0.40	100%			
8	A	721245.28	703827.76	6.00	105.00	5.00	0.00	0.40	100%			
9	A	721190.47	703827.77	6.00	287.00	5.00	0.00	0.40	100%			
10	A	721212.30	703819.35	6.00	110.00	5.00	0.00	0.40	100%			
11	A	721166.88	703808.71	6.00	309.00	5.00	0.00	0.40	100%			
12	A	721141.27	703797.40	6.00	10.00	5.00	0.00	0.40	100%			
13	A	721230.17	703867.10	6.00	98.00	5.00	0.00	0.40	100%			
14	A	721209.51	703877.69	6.00	282.00	5.00	0.00	0.40	100%			
15	A	721186.94	703865.79	6.00	52.00	5.00	0.00	0.40	100%			
16	A	721182.60	703891.40	6.00	268.00	5.00	0.00	0.40	100%			
17	A	721157.00	703878.38	6.00	81.00	5.00	0.00	0.40	100%			
18	A	721132.69	703896.78	6.00	274.00	5.00	0.00	0.40	100%			
19	A	721122.44	703884.93	6.00	47.00	5.00	0.00	0.40	100%			
20	A	721257.75	703887.16	6.00	279.00	5.00	0.00	0.40	100%			
21	A	721290.30	703884.63	6.00	101.00	5.00	0.00	0.40	100%			
22	A	721314.57	703902.40	6.00	279.00	5.00	0.00	0.40	100%			
23	A	721344.08	703896.80	6.00	197.00	5.00	0.00	0.40	100%			
24	A	721332.01	703873.61	6.00	7.00	5.00	0.00	0.40	100%			
25	A	721345.52	703850.98	6.00	183.00	5.00	0.00	0.40	100%			
26	A	721334.72	703821.65	6.00	17.00	5.00	0.00	0.40	100%			
27	A	721349.67	703803.31	6.00	189.00	5.00	0.00	0.40	100%			
28	A	721361.28	703793.57	6.00	104.00	5.00	0.00	0.40	100%			
29	A	721336.45	703784.40	6.00	104.00	5.00	0.00	0.40	100%			
30	A	721299.70	703771.23	6.00	110.00	5.00	0.00	0.40	100%			
31	A	721282.99	703747.03	6.00	182.00	5.00	0.00	0.40	100%			
32	A	721287.90	703713.52	6.00	206.00	5.00	0.00	0.40	100%			
33	A	721260.31	703767.33	6.00	292.00	5.00	0.00	0.40	100%			
34	A	721214.30	703725.23	6.00	282.00	5.00	0.00	0.40	0%			
35	A	721183.95	703750.46	6.00	286.00	5.00	0.00	0.40	100%			
36	A	721161.83	703749.07	6.00	331.00	5.00	0.00	0.40	100%			

Layout Continued

ID	Type	X	Y	Height	Angle	Tilt	Cant	Out-reach	Dimmed to	Target X	Target Y	Target Z
37	A	721220.76	703748.25	6.00	104.00	5.00	0.00	0.40	100%			
38	A	721305.99	703706.71	6.00	292.00	5.00	0.00	0.40	100%			
39	A	721335.63	703717.16	6.00	295.00	5.00	0.00	0.40	100%			
41	H	721358.93	703725.39	6.00	293.00	5.00	0.00	0.40	100%			
42	A	721275.42	703693.34	6.00	285.00	5.00	0.00	0.40	100%			
43	A	721246.43	703686.37	6.00	280.00	5.00	0.00	0.40	100%			
44	A	721212.18	703680.21	6.00	277.00	5.00	0.00	0.40	100%			
45	A	721190.26	703670.72	6.00	75.00	5.00	0.00	0.40	100%			
46	B	721219.32	703886.57	6.00	256.00	0.00	0.00	0.40	100%			
47	B	721209.80	703902.18	6.00	347.00	0.00	0.00	0.40	100%			
48	B	721218.41	703917.34	6.00	260.00	0.00	0.00	0.40	100%			
49	B	721193.63	703913.53	6.00	89.00	0.00	0.00	0.40	100%			
51	B	721161.22	703915.82	6.00	82.00	0.00	0.00	0.40	100%			
52	B	721118.85	703930.36	6.00	76.00	0.00	0.00	0.40	100%			
53	B	721144.73	703913.08	6.00	180.00	0.00	0.00	0.40	100%			
54	B	721139.52	703905.46	6.00	0.00	0.00	0.00	0.40	100%			
55	F	721245.68	703920.16	6.00	85.00	0.00	0.00	0.40	80%			
56	G	721211.62	703922.87	6.00	83.00	0.00	0.00	0.40	80%			
57	G	721168.38	703926.30	6.00	82.00	0.00	0.00	0.40	100%			
58	G	721286.33	703918.58	6.00	95.00	0.00	0.00	0.40	80%			
59	G	721322.89	703920.67	6.00	92.00	0.00	0.00	0.40	80%			
61	G	721131.70	703931.31	6.00	83.00	0.00	0.00	0.40	100%			
62	D	721092.72	703935.29	6.00	84.00	0.00	0.00	0.40	100%			
63	D	721055.61	703938.62	6.00	84.00	0.00	0.00	0.40	100%			
64	D	720925.99	703886.18	6.00	109.00	0.00	0.00	0.40	100%			
65	F	721025.79	703929.11	6.00	130.00	0.00	0.00	0.40	100%			
66	F	721004.67	703912.02	6.00	122.00	0.00	0.00	0.40	100%			
67	D	720964.30	703898.46	6.00	106.00	0.00	0.00	0.40	100%			
68	D	720891.63	703872.85	8.00	107.00	0.00	0.00	0.40	100%			
69	E	720864.37	703896.44	8.00	353.00	0.00	0.00	1.50	100%			
70	E	720888.66	703863.92	8.00	205.00	0.00	0.00	1.50	100%			

Horizontal Illuminance (lux)

Grid 1

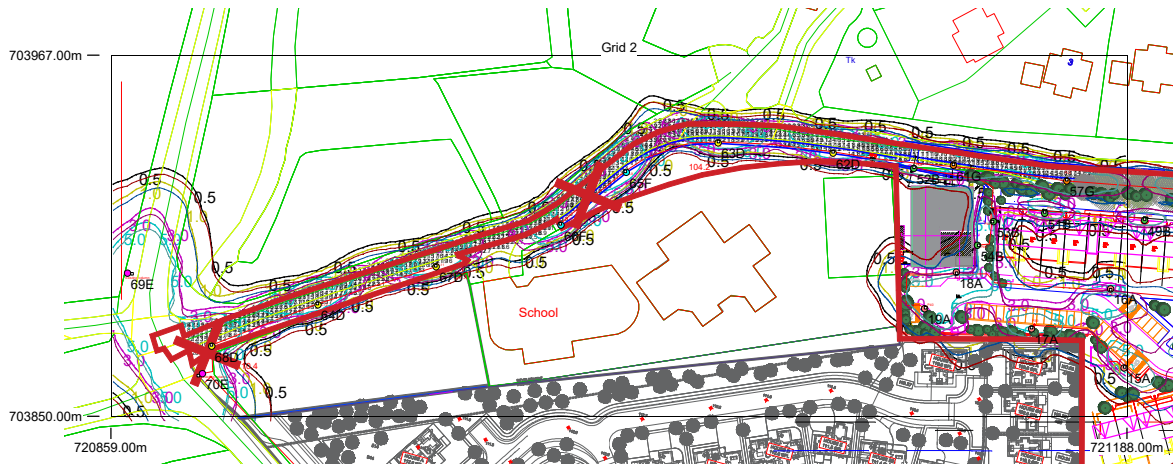


Results

Eav	5.33
Emin	1.05
Emax	17.21
Emin/Emax	0.06
Emin/Eav	0.20

Horizontal Illuminance (lux)

Grid 2



Results

Eav	7.93
Emin	1.56
Emax	29.68
Emin/Emax	0.05
Emin/Eav	0.20

Horizontal Illuminance (lux)

Grid 3



Results

Eav	7.79
Emin	1.80
Emax	23.80
Emin/Emax	0.08
Emin/Eav	0.23